

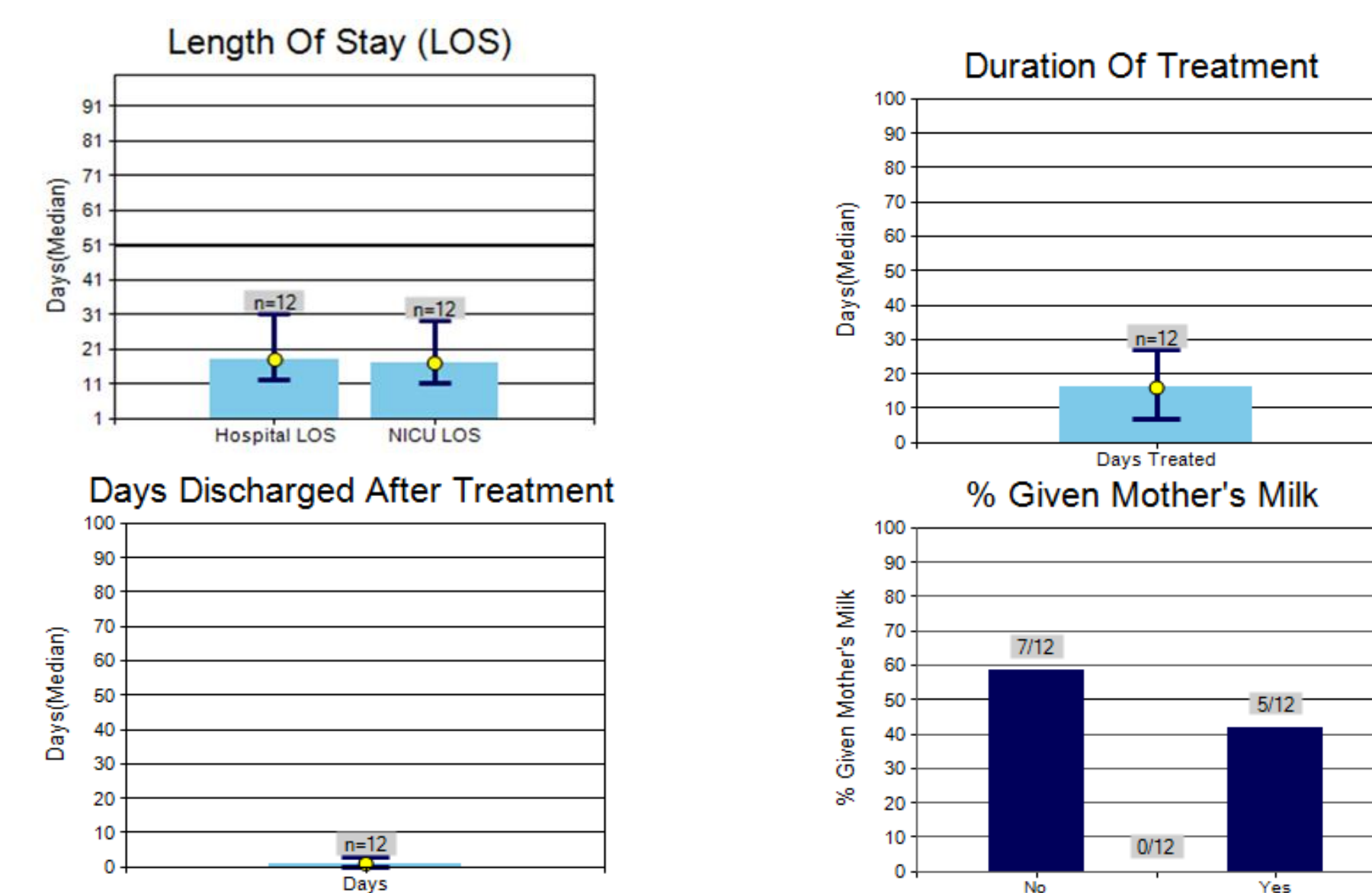
Caring for Families Impacted by Neonatal Abstinence Syndrome

Amy Atwater, Brandi Brewer, Nancy DeNolf, Mary Harrison, Dea Schafer
Contact: amy.atwater@helendevoschildrens.org

AIM: Decrease median length of stay from 18 days to 14 days by developing standard work for identification, evaluation, treatment and discharge of NAS patients

Sub-AIM: Improve staff understanding of addictive behavior through education and developing a partnership with the community clinic who care for our families and patients

Original: VON Day Audit



Team Rating of Drivers of Care for NAS: Current State

Driver	Potential Benefit	Feasibility	Within Our Control	Time to Implement	Impact	Evidence
Addiction Education Total=28	5	5	5	3	5	5
Continuity Relationships Total=24	5	4	4	3	5	3
Intra-disciplinary Team Total=27	5	5	5	4	4	4
Standardized Care Process Total=26	5	5	5	3	5	5
Avoid Scoring Inconsistencies Total=26	5	4	3	3	5	5



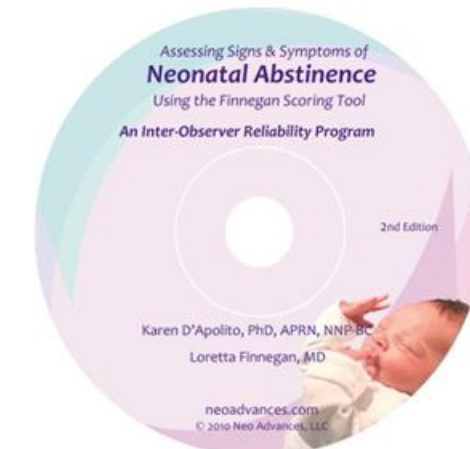
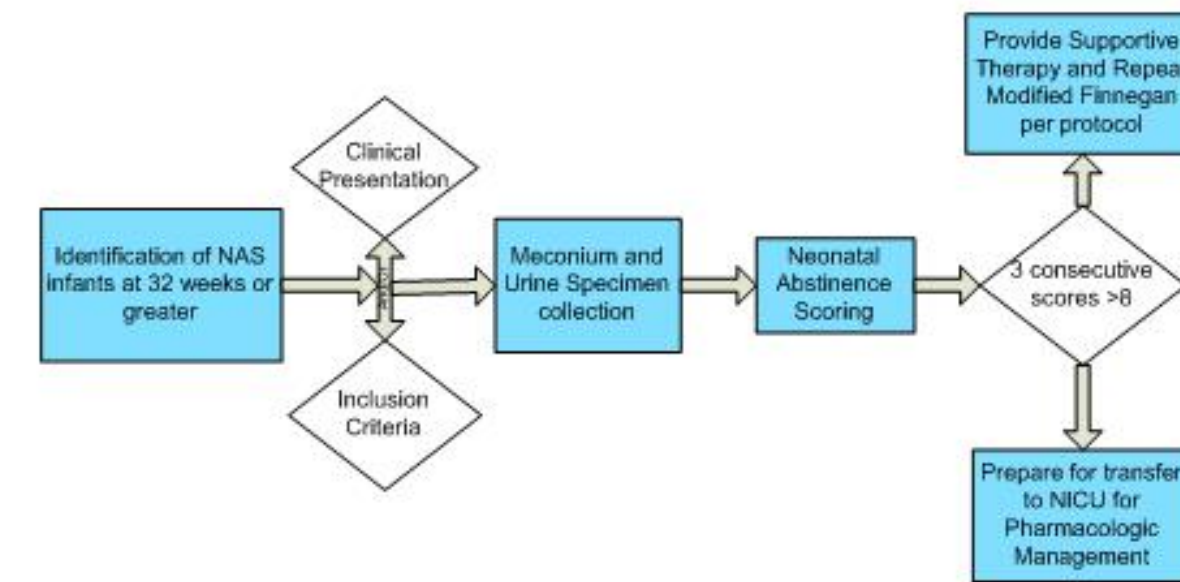
Identification

- Clinic referrals
- Risk factors
- Infants demonstrating symptoms of withdrawal
- Positive meconium or urine test



Evaluation

- Mandatory education for all staff who will evaluate infants for NAS
- Second evaluator to confirm diagnosis
- Standardization of assessment
- Utilize current program for training



Treatment

Supportive Therapy

- Single Room
- Reduce Environmental Stimuli
- Ensure adequate nutrition
- Protect Skin
- Respond to infant Cues
- Encourage Attachment



Pharmacological Therapy

Transitioning to the 'Maternal Opioid Treatment: Human Experimental Research' (MOTHER) treatment recommendations

Dose given 3-4 hrs with feeds, do not exceed 4 hrs between doses
 02:00 Morphine 10 mg/kg Q20C FOR
 MATERNAL
 02:0
 9:12 0.04 mg/kg
 13:00 0.08 mg/kg
 17:00 0.12 mg/kg
 21:00 0.16 mg/kg
 25:00 0.20 mg/kg

Documentation

Discharge and Follow-Up

- Encourage family to room in to promote bonding
- Phone call by Neonatologist to Pediatrician to help manage infants being discharged on medication
- Connect infants and families with the Developmental Clinic and Community Resources
- Teach families soothing techniques

Addiction Education

- Physician
- NICU staff and support staff

Interdisciplinary Team

- Clinics
- Obstetrics
- Community

Avoid Scoring Inconsistencies

- Practitioners
- Nursing

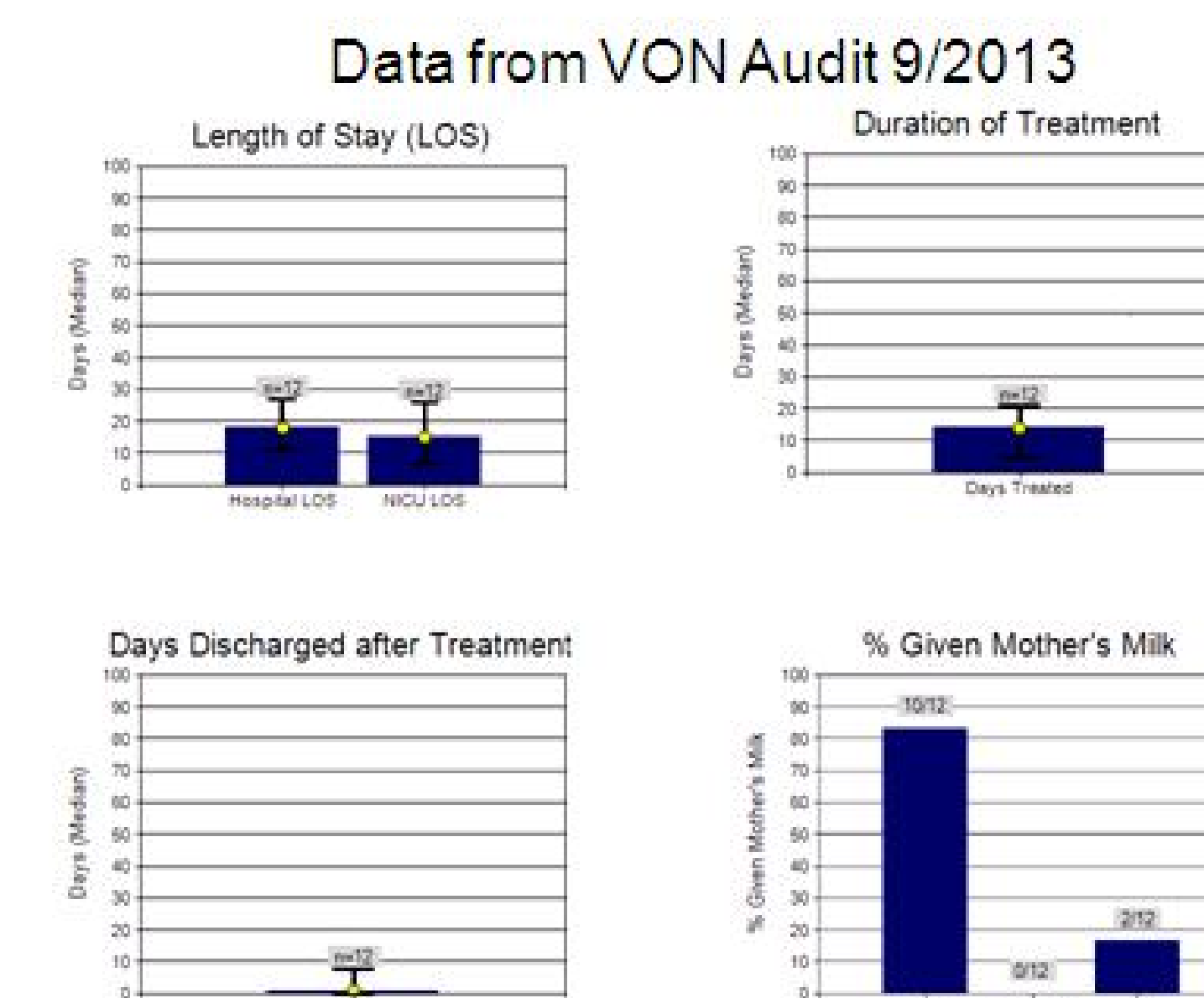


Addiction and Neonatal Abstinence Syndrome Discussions about assisting families traveling the pathway of recovery and healing.

Presenters include Dr. Waller, an addiction specialist; Alisha Tichenor, Neonatal Nurse Practitioner and Jason Powell, Physical Therapist.

Participants will enhance their knowledge of addiction and treatment, assessment and care of the newborn experiencing NAS and pharmacological and nonpharmacological approaches to treatment.

These in-services are required for Women's and Infants & Neonatal Services Nurses & Neonatal Services Nurse Techs



NEXT STEPS

- Assess Unit Attitudes Pre and Post Addiction Education
- Review Policies on Breast Feeding
- Recruit a mother who is willing to be part of our Parent-to-Parent support team
- Review facility lay out and look at opportunities to cohort patient and encourage bonding
- Continue Participation in the next NAS series
- Write standard work for staff related to NAS