

Exercises!

Everyone

© RANDY ANDERSON

WWW.ANDERSTOONS.COM



"How much exercise would you say you skip each week?"

Exercises

- Two large group exercises we'll do together
 - First feeding of human milk
 - Admission temperature
 - Several small group/individual exercises to work through on your own (after break)
-

Key Driver Diagram

SMART Aims

Decrease rate of NEC in VLBW infants by 25% by January 2017
Outcome measure: NEC rate per 100 VLBW days

Primary Drivers

Use of Mother's Milk (MM)
Process Measure: % of infants receiving MM at discharge

Standardized Feeding Protocol
Process Measure: % of infants who followed feeding protocol

Secondary Drivers/Interventions

Mother's Milk Initiation
Process Measure: % of infants w/ first feeding of MM
Process Measure: time to first use of MM for oral care

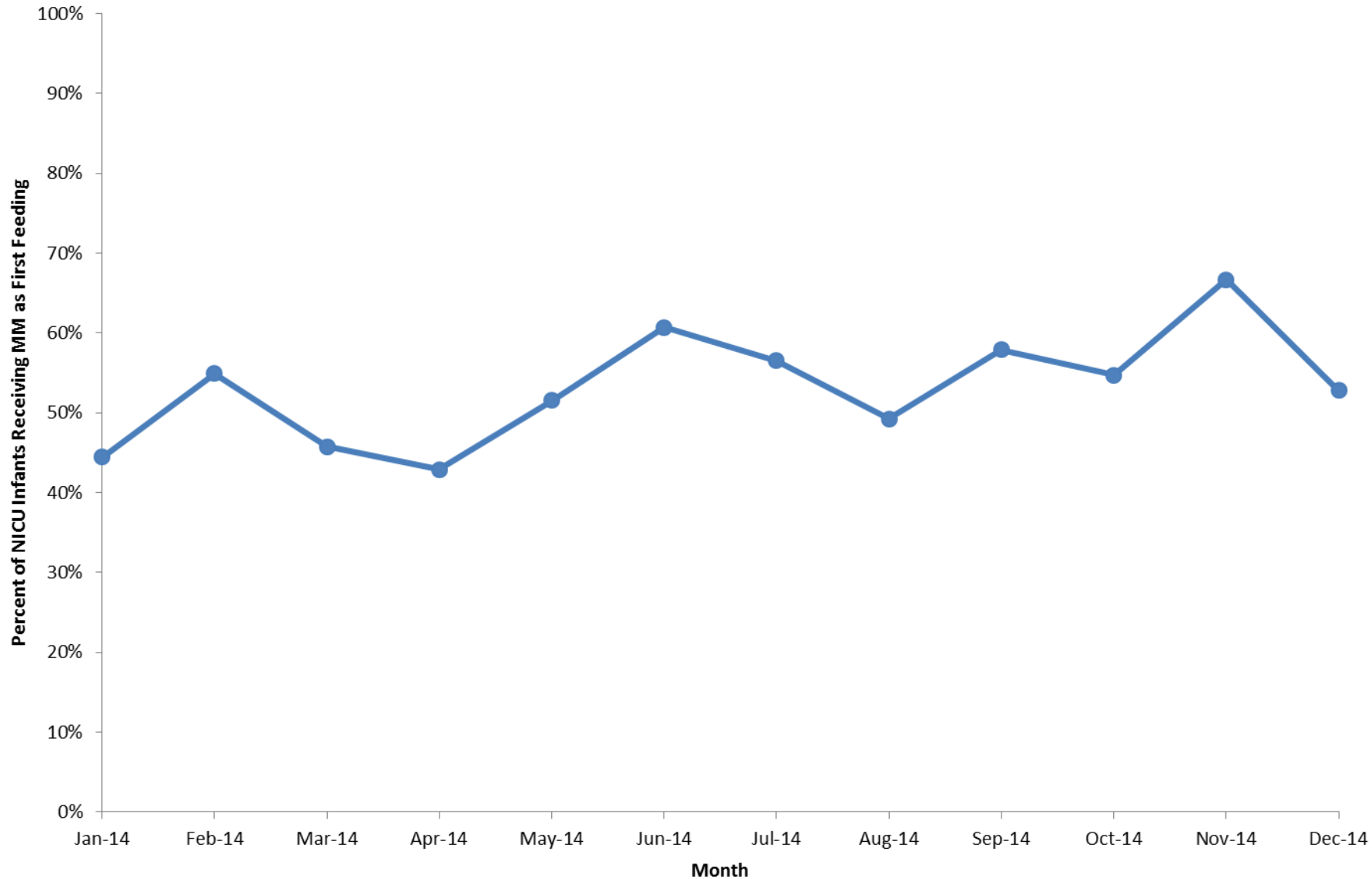
Milk Continuation
Process Measure: # of days held skin-to-skin in first month

Donor milk use

Standardized feeding advancement

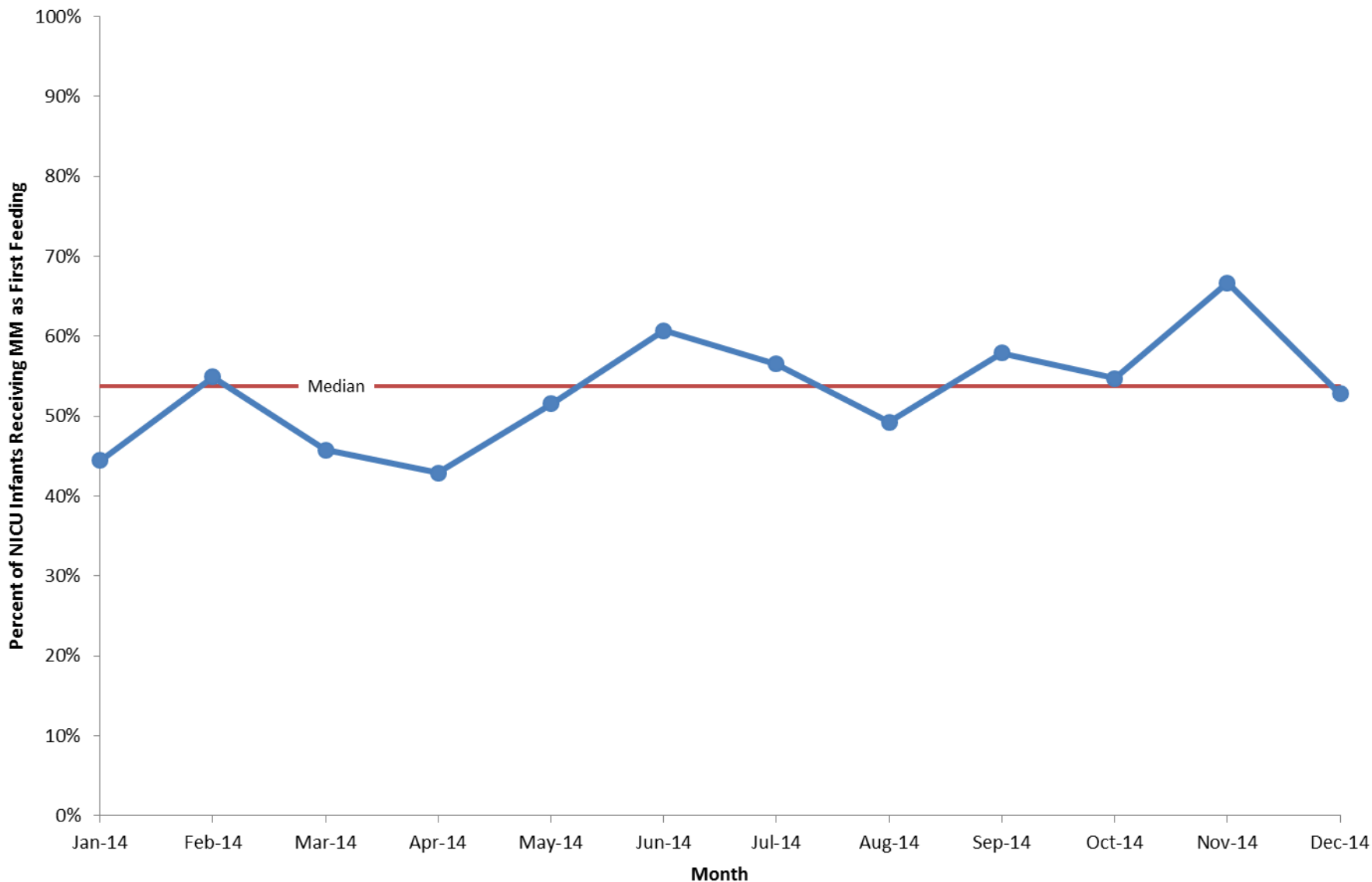
Standardized fortification

First Feeding as Mother's Milk, NICU Infants



How do we make this a run chart?

First Feeding as Mother's Milk, NICU Infants Run Chart



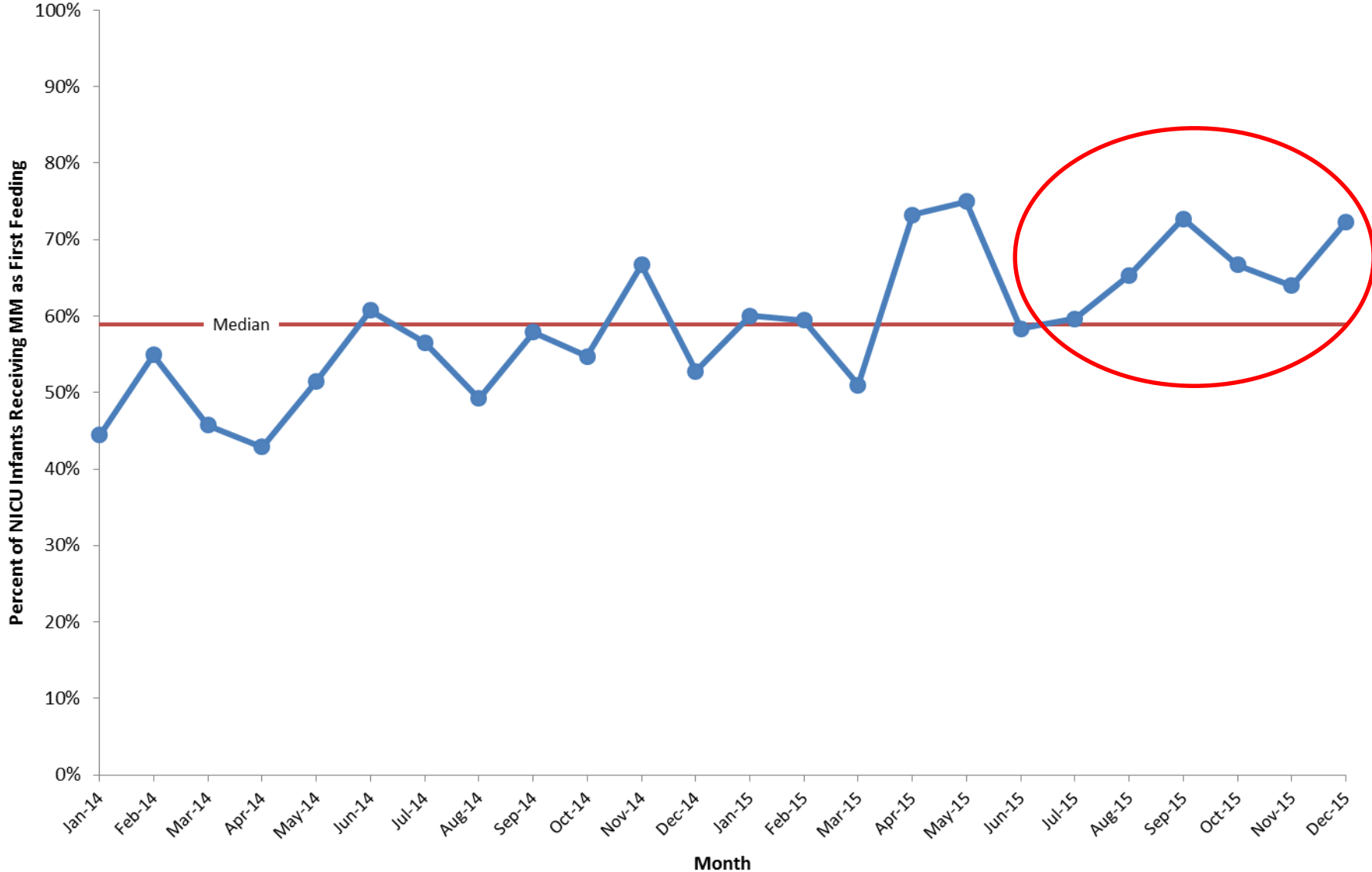
Added median!

How do you interpret this run chart?

Any signal?

What would you do next?

First Feeding as Mother's Milk, NICU Infants Run Chart



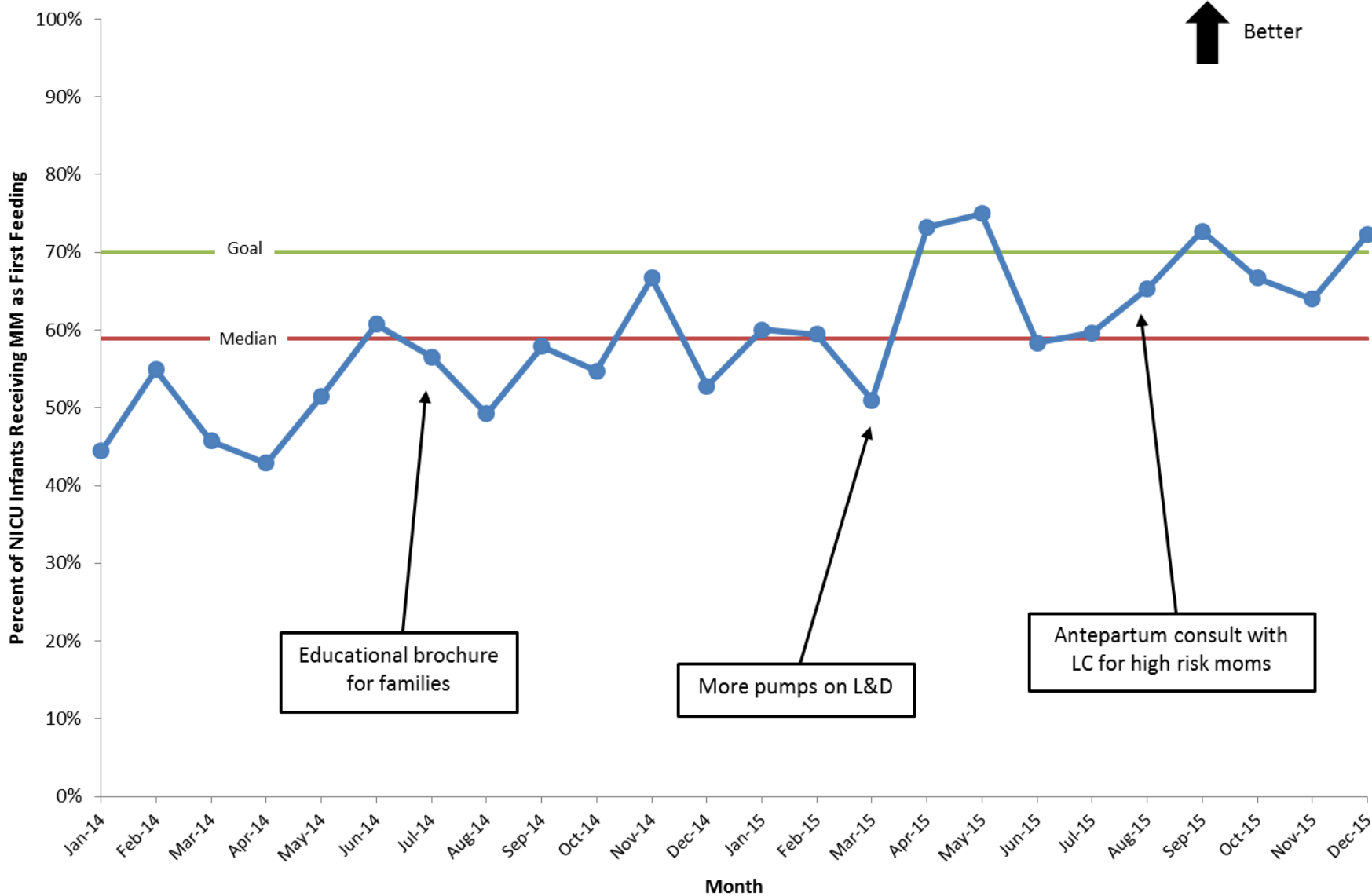
Added 12 more months.

Any signal?

How many runs? How many runs expected?

How could you make chart better?

First Feeding as Mother's Milk, NICU Infants Run Chart



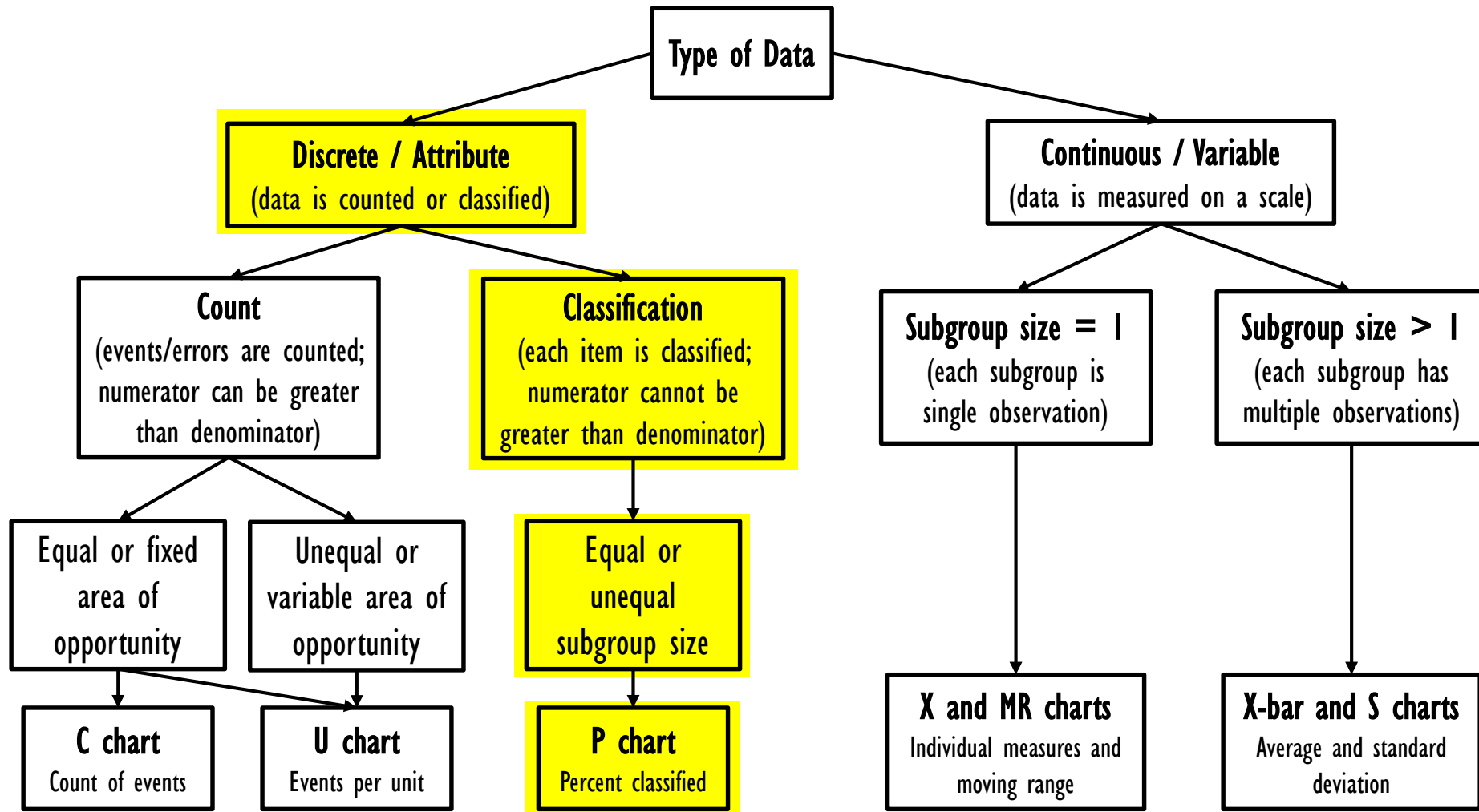
Added goal line, annotations, and direction of improvement arrow.

Pretty good run chart!

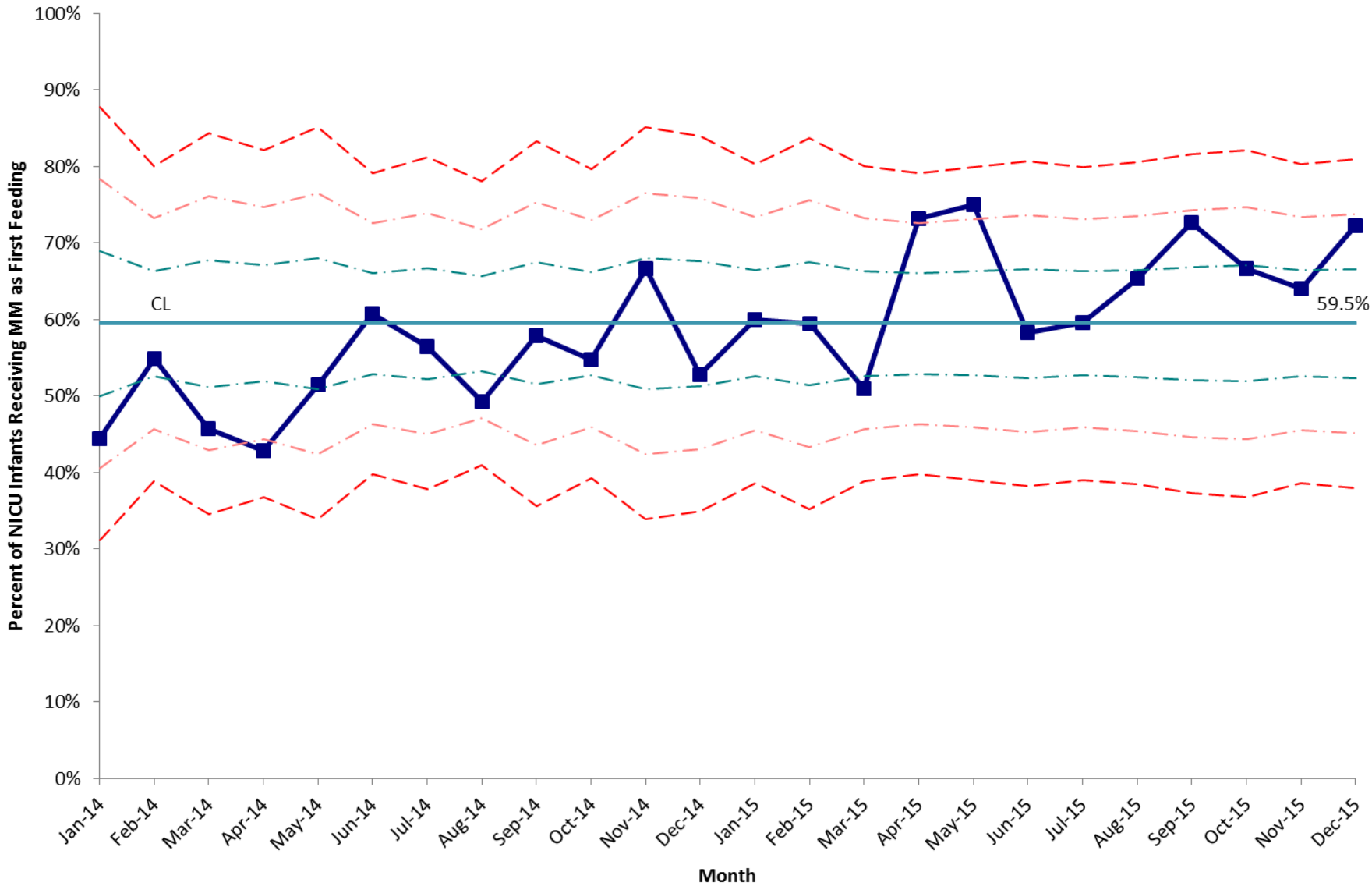
Let's try a control chart.

Which Control Chart to Use?

Percent of NICU infants that receive human milk as first feeding

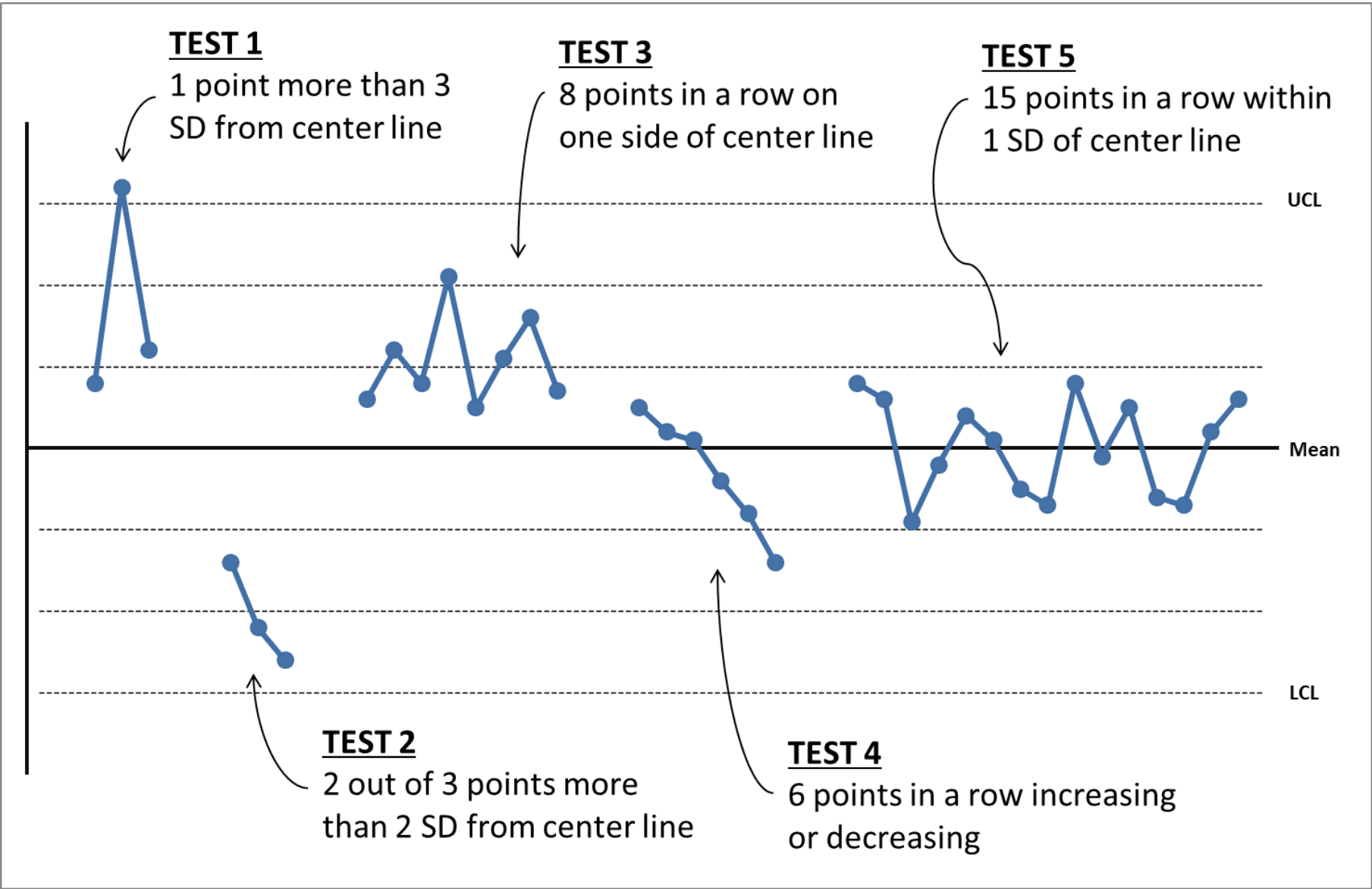


First Feeding as Mother's Milk, NICU Infants p-chart

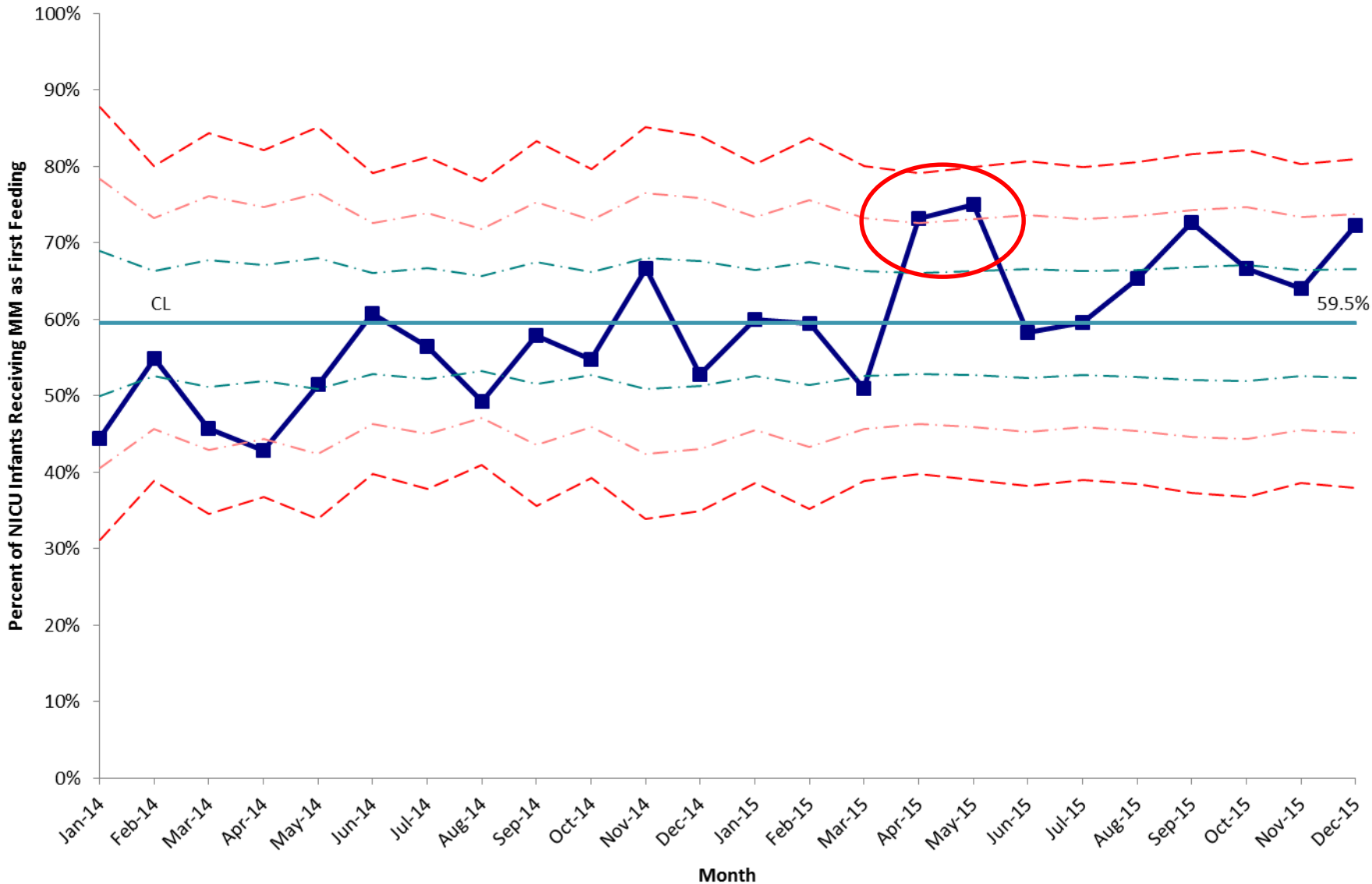


Any signal?

Rules for Identifying Special Cause



First Feeding as Mother's Milk, NICU Infants p-chart



Any signal?

*Earlier detection
of special cause
variation.*

*Can also add
annotations,
goal line,
direction arrow.*

Let's make these charts!

